

# EIC Collaboration Meeting

6-7 April, 2007 – 26-414 Kolker Room, M.I.T.

## Friday, 6 April, 2007

### Session 1 - The Nucleon: Science Case - Chair: Abhay Deshpande

09:00 - Welcome, overview of meeting goals - Richard Milner

09:15 - Central questions in proton structure - Werner Vogelsang and Abhay Deshpande

09:45 - The gluon contribution to nucleon spin - Antje Bruell

10:30 - Coffee

11:00-12:00 - Short presentations (~10-15 min.)

The gluon distribution in the proton - Allen Caldwell

GPD determinations with EIC - Christian Weiss

12:00 - Discussion: Explicit planning for Galveston:

What plots and simulations plots to be improved and finalized?

What open questions remain and how do we address them?

12:30 - Lunch – Grier Room – 34-401

### Session 2 - The Nucleus: Science case - Chair: Peter Jacobs

13:30 - Study of the universal nature of the strong gluon fields in nuclei - Thomas Ullrich 14:00 - Saturation physics – Yuri Kovchegov

14:30 - Development of MC generators: problems, issues, solutions – Brian Cole

15:00 - Coffee

15:30-16:30 - Short Presentations (~10-15 min.)

Perspectives on universality - Krishna Rajagopal

The Oompf factor in eA: The A dependence of the saturation scale - Thomas Lappi

Diffraction in eA - Cyrille Marquet

Longitudinal structure functions at an electron-ion collider - James Dunlop

Prospects of charm measurements at a new electron-ion collider - Zhangbu Xu

16:30 - Discussion: Explicit planning for Galveston

What plots and simulations plots to be improved and finalized?

What open questions remain and how do we address them?

17:00 - Finalization of:

1-page science summary for EIC - R. Milner

1-page EIC accelerator specifications - A. Deshpande and R. Ent

**Dinner – Friday, 6 April, 2007 at 20:00**

**Ristorante Fiore, 250 Hanover Street, Boston**

**Saturday, 7 April, 2007**

**Session 3 - EIC Accelerator - Chair: Chris Tschalär**

Talks should overview the accelerator design and detail the R&D plans with cost and time scales for both.

09:00 - Discussion eRHIC R&D and realization plan - Thomas Roser

09:45 - Discussion eLIC R&D and realization plan - Lia Merminga

10:30 - Coffee

11:00 - Discussion of EIC accelerator designs and R&D plans

1-page summary for Galveston - T. Roser and L. Merminga

12:30 - Lunch - Forbes Café, Stata Center

**Session 4: EIC Detector and Collaboration Organization - Chair: Allen Caldwell**

13:30 - EIC Detector R&D plans - Bernd Surrow and Rolf Ent

14:30 - Preparation for Galveston - Rolf Ent

1 page science overview - R. Milner

1 page accelerator specifications - R. Ent and A. Deshpande

1 page accelerator R&D overview - T. Roser and L. Merminga

1 page detector R&D overview - B. Surrow and R. Ent

The draft recommendation for Galveston

List of likely questions and answers - E. Aschenauer

15:30 - Coffee

16:00 - EIC Collaboration structure and organization - Abhay Deshpande

# Computer Access

While attending the meetings attendees can access either the MIT wireless network or the LNS wireless network. The MIT network works almost everywhere on campus while the LNS service is only available in regions of building 24 and 26. Instructions for connecting to both follow.

## MIT Wireless Network

Guests can use the MIT wireless service for 14 days. The procedure for connecting is as follows:

1. boot your computer
2. ensure that you are configured to connect wirelessly using DHCP and have selected the MIT wireless service
3. start your web browser which will immediately transfer to a registration page
4. select "Visitors" and follow the instructions
5. after about 15 minutes for the registration information to be processed you should have internet access

## LNS Wireless Network

A similar procedure is available to use the LNS wireless service for 14 days. However, for this you will need to enter a password during the registration process. This password will be given out at the meeting.

1. boot your computer
2. ensure that you are configured to connect wirelessly using DHCP and have selected the LNS wireless service
3. start your web browser which will immediately transfer to a registration page
4. complete the registration form filling in the password (look at the blackboard) plus the name of one of the MIT hosts (e.g. Milner)
5. after about 15 minutes for the registration information to be processed you should have internet access

# **EIC Meeting Dinner**

Friday, 6 April, 2007 at 20:00

## **Ristorante Fiore**

250 Hanover Street, Boston

### **Directions**

#### ***Walking***

The restaurant is approximately 3 km from MIT suitable for an evening stroll after the day's meetings (see map).

- Walk east through campus (or along Vassar St or Memorial Dr) to Main St.
- Turn right on Main St. and cross over the Charles River on the Longfellow Bridge (has the salt and pepper shaker shaped towers).
- Continue straight along Cambridge St. passing Massachusetts General Hospital on your left and Beacon Hill on your right.
- As you get to the top of the hill and just past Sudbury St (on left) or Somerset St (on right) you'll see Government Center to your left.
- Walk through Government Center Plaza staying somewhat to the left of center.
- Cross Congress St. to Hanover St. and the restaurant is at 250 Hanover St.
- If you hit Sudbury St. after crossing Congress St. you are too far left. If you hit North St., Union St., or Faneuil Hall and Market you are too far right.

#### ***Subway***

It is a short walk from the Haymarket stop on the Green or Orange Lines of the "T" (see subway map).

- Board the Red line in the direction of Braintree at MIT/Kendal.
- Change at either:
  - Park (2 stops from MIT) to the Green line in the direction Lechmere, or
  - Downtown Crossing (3 stops from MIT) to the Orange line in the direction Oak Grove.
- Haymarket is 2 stops along either of these lines.
- The restaurant is a short walk east at 250 Hanover St.

# **Menu**

Dinner will be a five course meal served in a family style.

## **Antipasto**

assorted dry Italian meats and cheeses drizzled with olive oil and basil

## **Pasta**

### **Rigatoni**

homemade pasta tossed with tomato sauce

## **Salad**

### **Cesare salad**

Romaine lettuce tossed with Cesare dressing served with croutons and shaved parmigiano cheese

## **Entrée**

### **Saltimboca di Vitello**

pan-seared veal cutlet with mushrooms and marsala wine sauce topped with prosciutto, fresh mozzarella, and sage

### **Baked salmon**

baked salmon served with a lemon, caper, and white wine sauce

### **Assorted roasted vegetables**

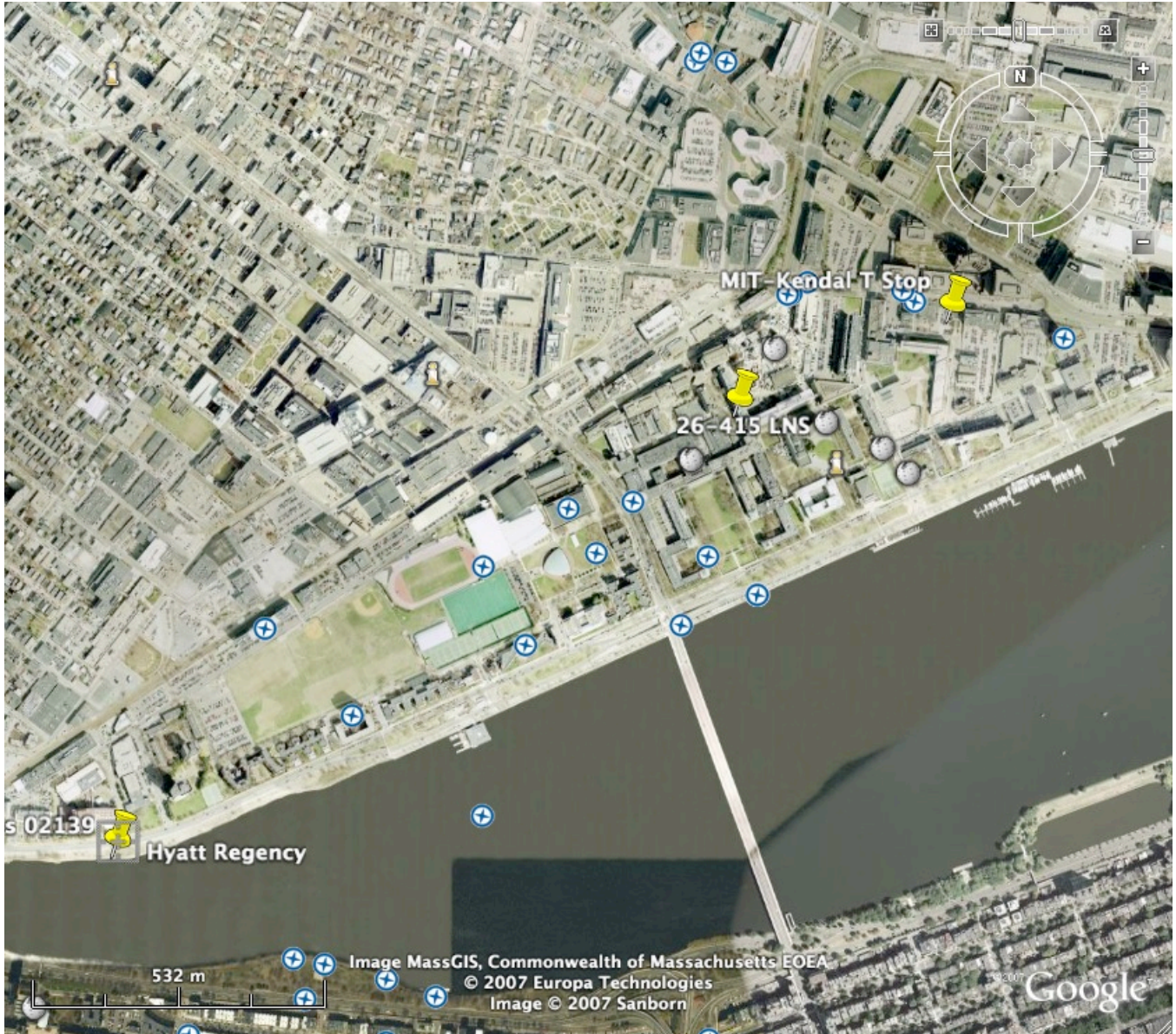
## **Dessert**

mixed Italian mini pastries

## **Coffee and Tea**

# Maps

## Hyatt Regency – MIT, LNS – MIT/Kendall “T” Stop





# MIT – Ristorante Fiore



# MBTA Subway Map

